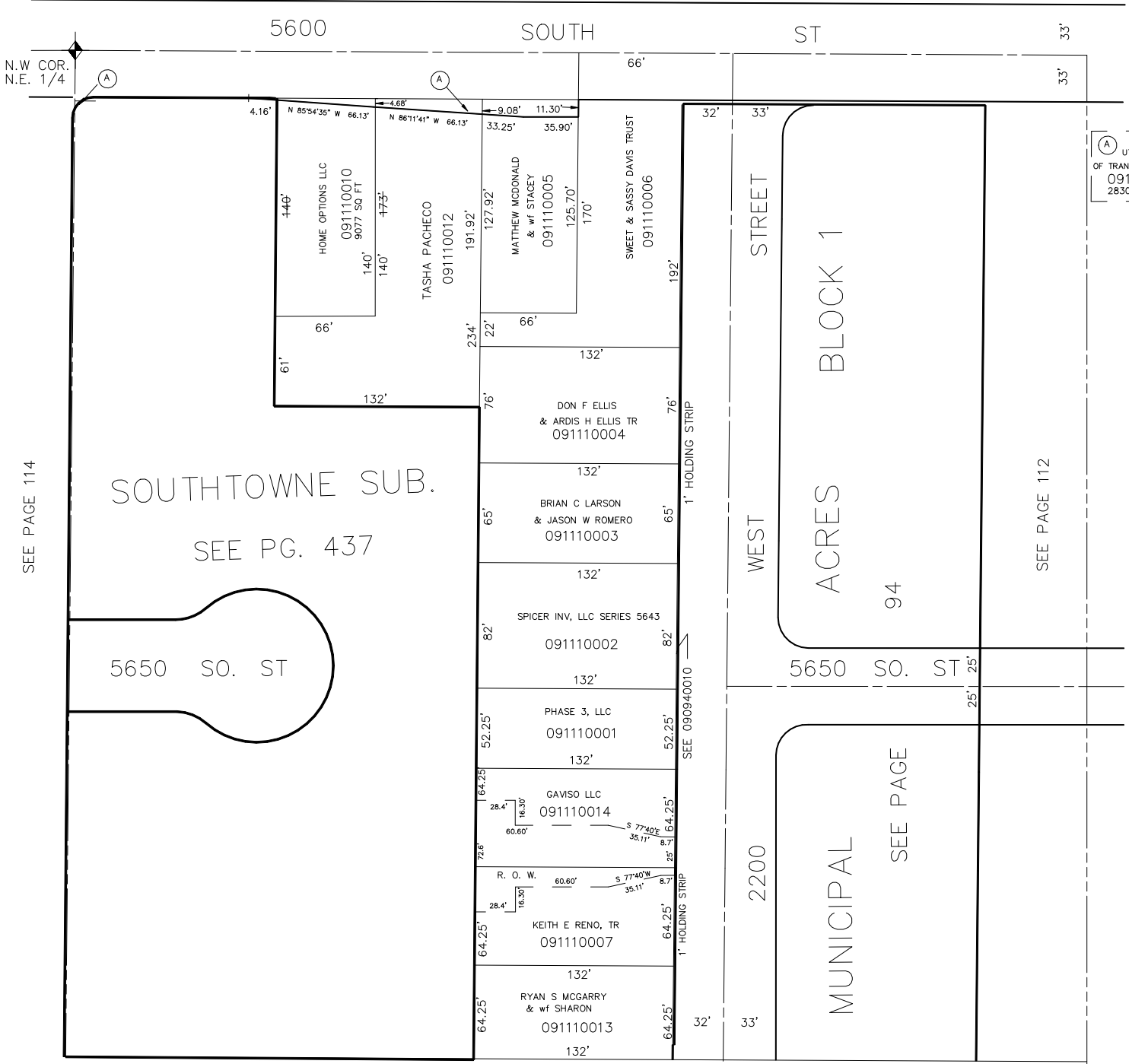


PART OF THE N.W. 1/4 OF N.W. 1/4 OF N.E. 1/4 OF
SECTION 23, T.5N., R.2W., S.L.B. & M.

IN ROY CITY
SCALE 1' = 50'

TAXING UNIT: 41

SEE PAGE 1



UTAH DEPT
OF TRANSPORTATION
091110015
2830 SQ FT

SEE PAGE 114

SOUTHTOWNE SUB.
SEE PG. 437

SEE PAGE 112

5650 SO. ST

ACRES
BLOCK 1

94

5650 SO. ST

MUNICIPAL
SEE PAGE

SEE PAGE 93